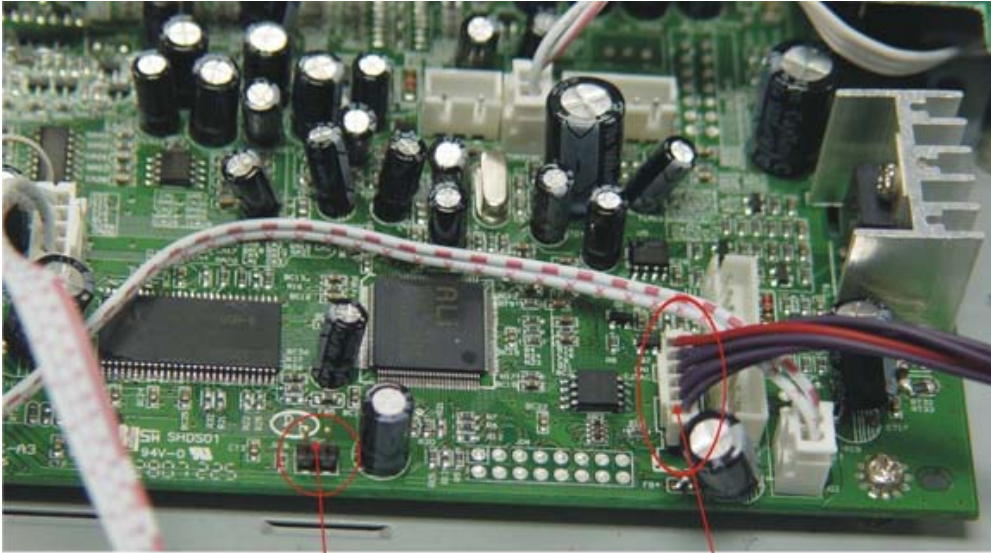


# Instruction of burn loader

- 1: Install All\_usb\_driver into PC.  
( Pls find the file of “ How to set up the driver for J-Tag, and follow the way to install the driver. )
- 2: Make sure the 6 pin Plug for J-Tag connction has soldered on main board.

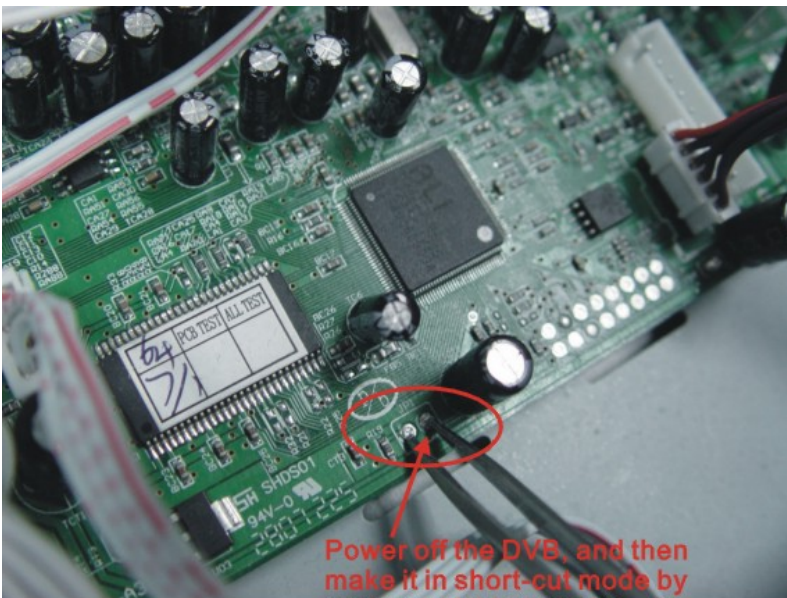


Pls power off the receiver, and make this two pins connected together, to make it in short-cut mode.

Pls pay attention to the direction of the plug port

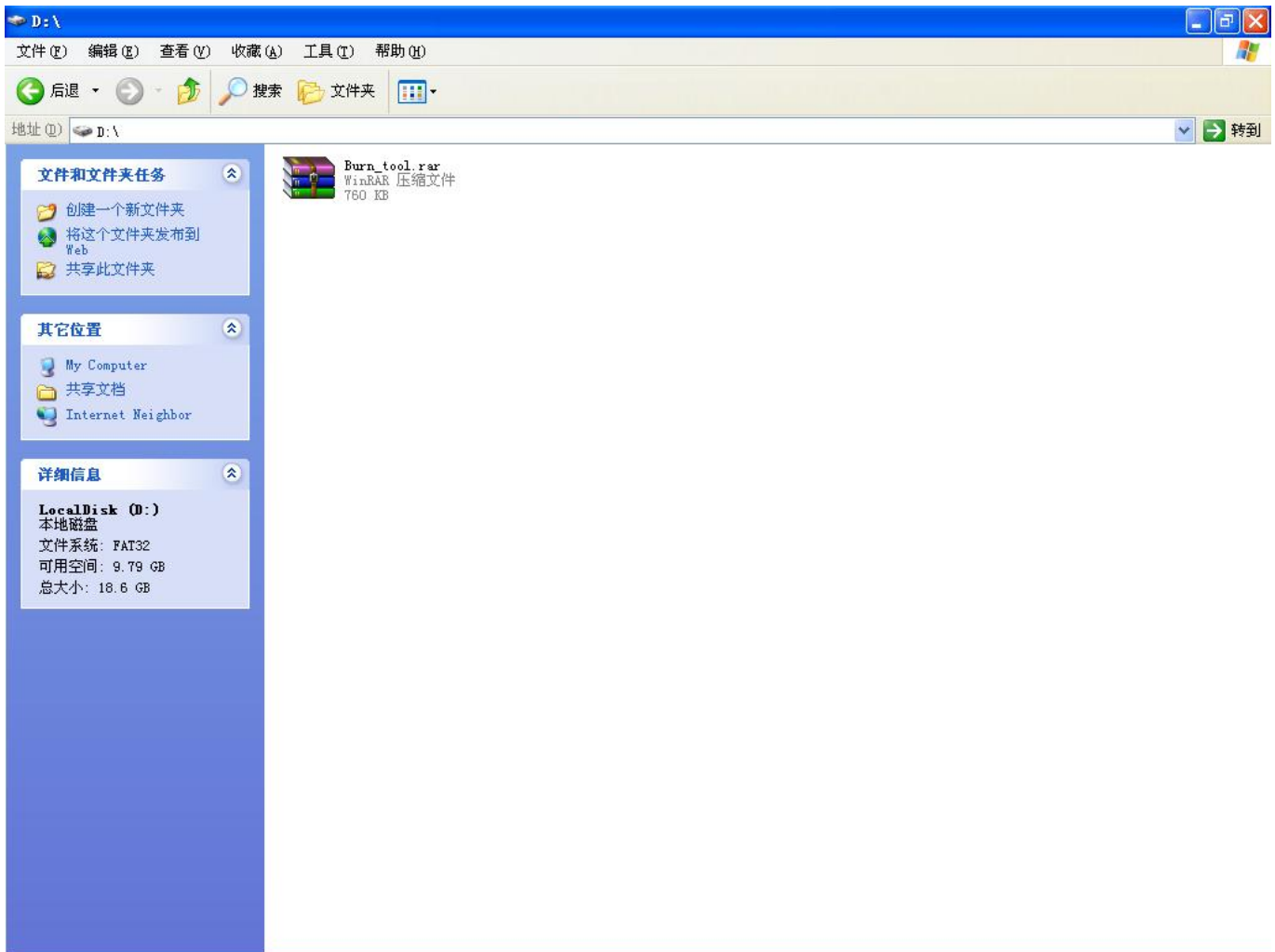
Make sure the 2 pin Plug for short-cut connection has soldered on main board.

Or you could use a Conductor, for example a Plier to make the Receiver in short-cut mode, that is ok.

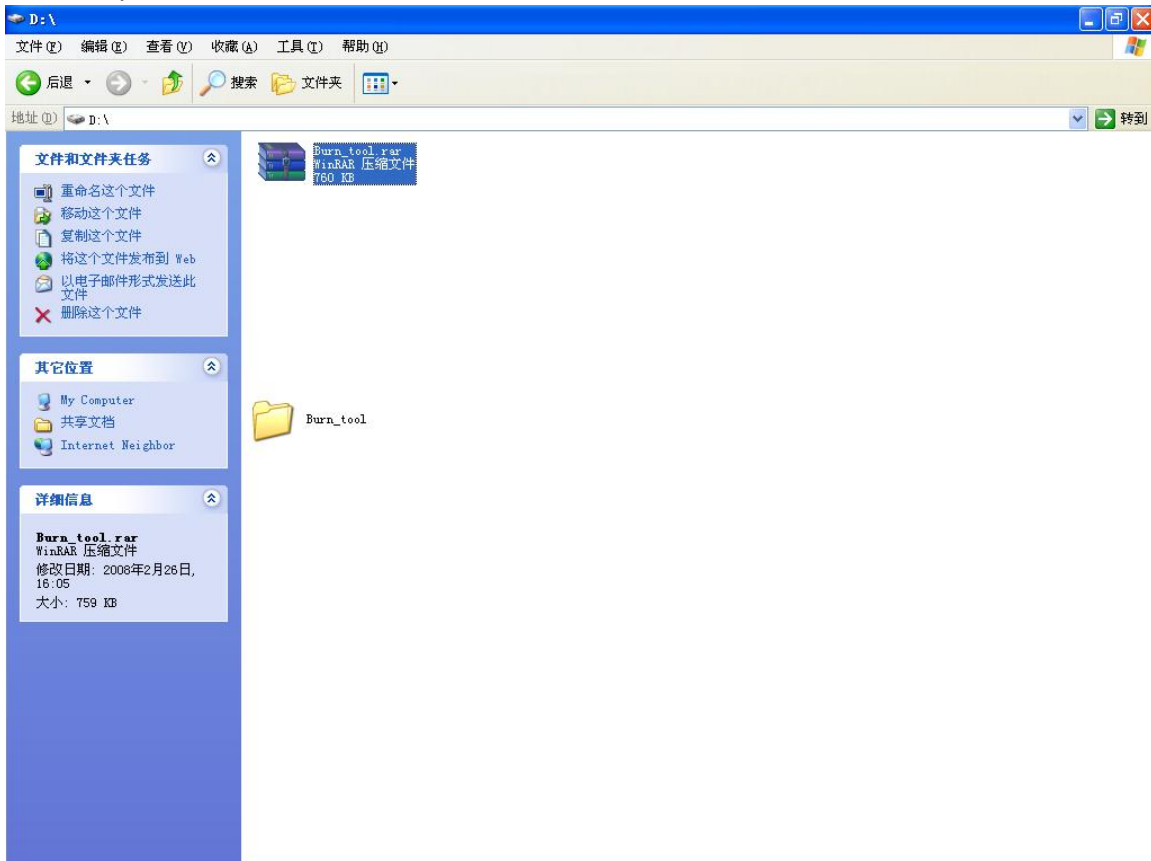


Power off the DVB, and then make it in short-cut mode by connected this two pins, and then power on the DVB.

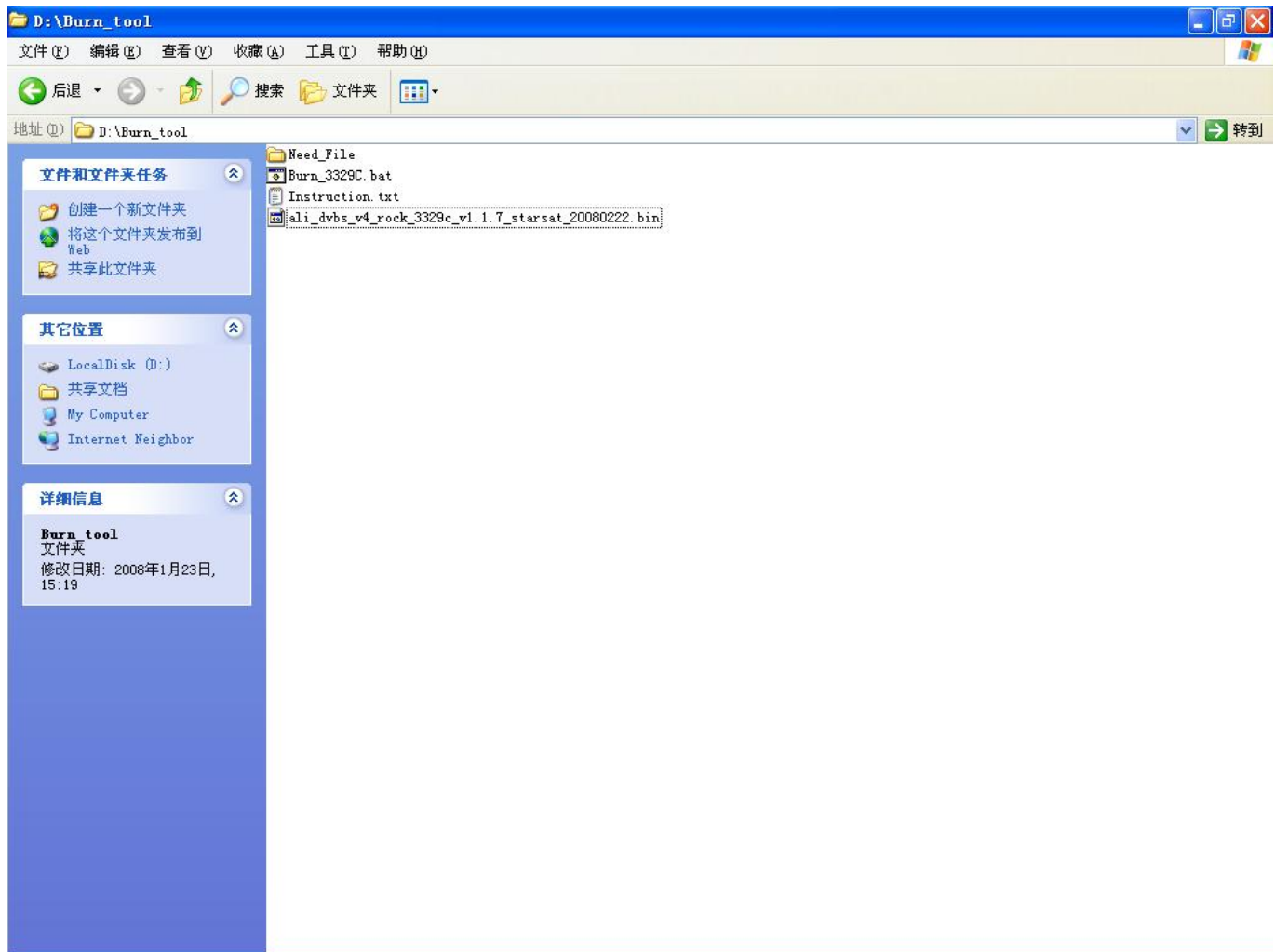
3: Put the file **Burn\_tool** in Drive D:



4: Decompress the **Burn-tool** file into current folder in Drive D, and then the file name would be Burn\_tool

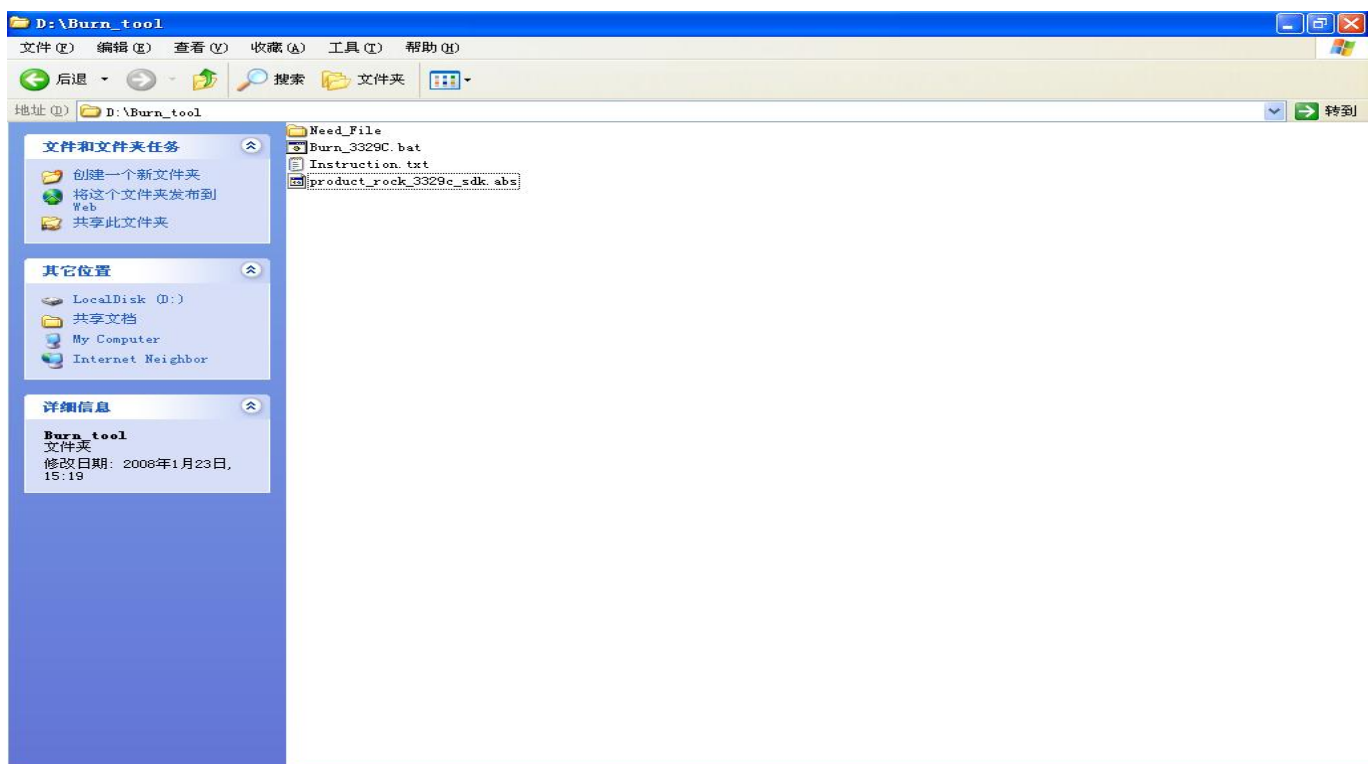


5: Open the file **Bure\_tool**, put the **new software** into this file "**Burn\_tool**"



And then pls do remember to **change the name** for this software as "**product\_rock\_3329c\_sdk.abs**".

( The software could not be detected and download if you do not change the file name in this way )



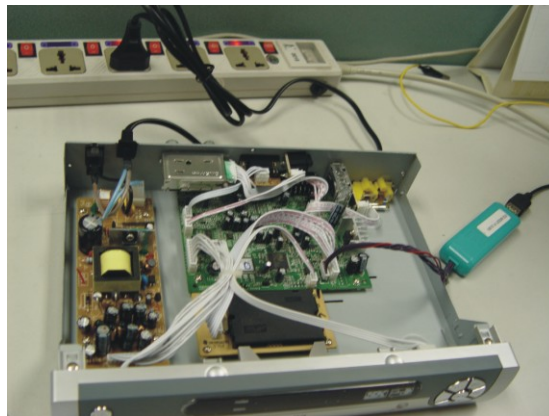
Remark: The file "**Need\_file**" is a data file, pls keep it still, don't move this file away, or you can't update the software according to our attached burn\_tool.



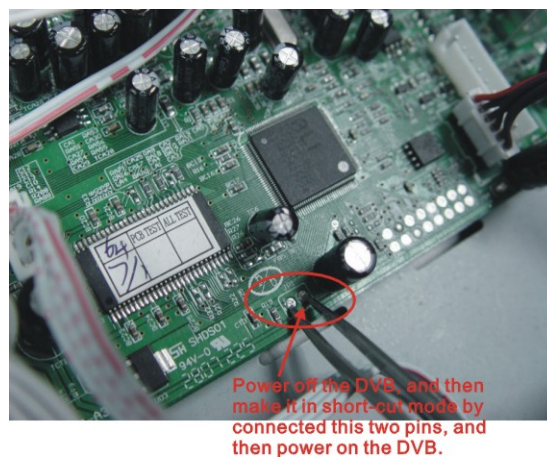
6: connected J-Tag with PC via USB cable:



And then connected J-Tag with DVB by 6 pin plug, pls pay attention to the direction as marked in below picture.



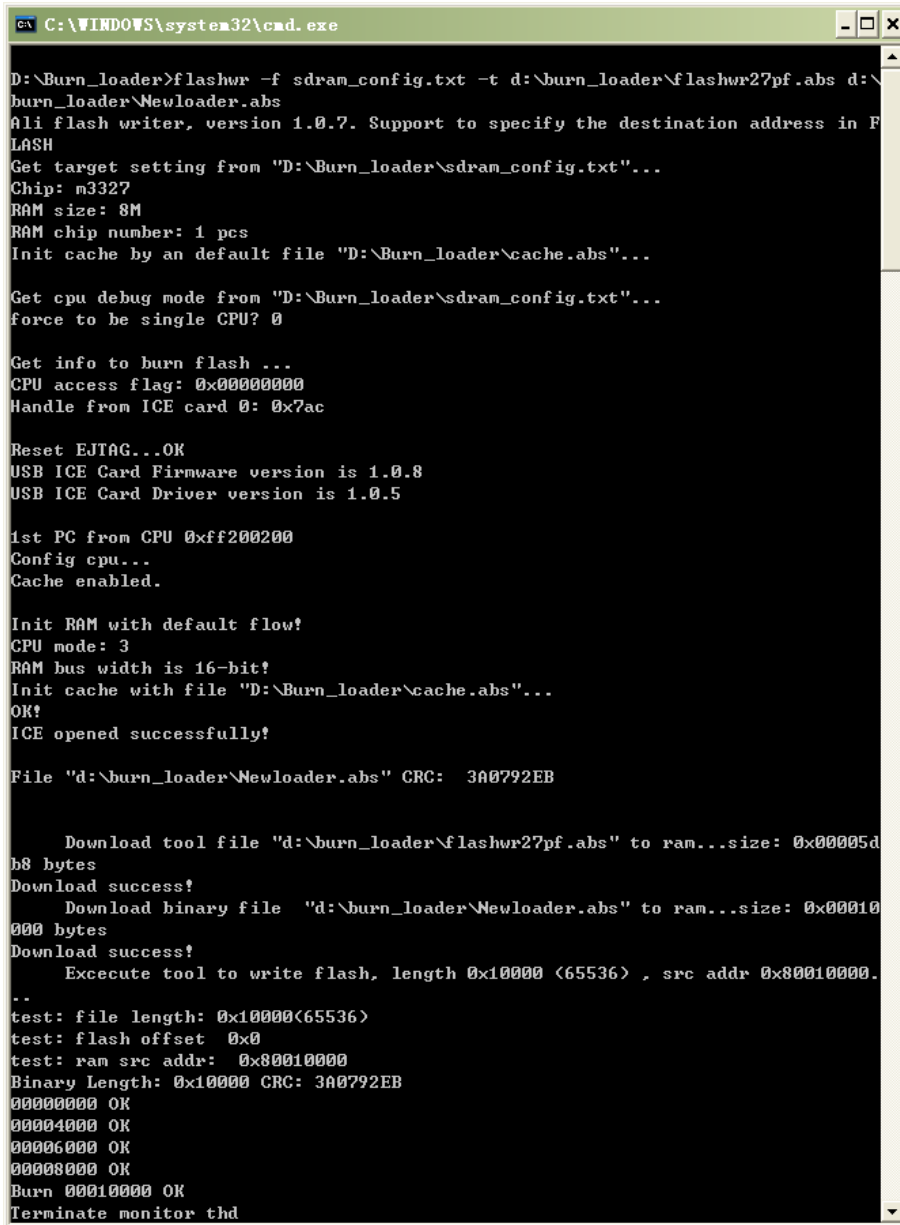
7: **power off** the DVB, and then make the DVB in short-cut mode by connected the two pin plug.



And then **power on** the DVB.

8: Dblclick the file "**Burn\_3329C.bat**", the updating will begin at once.

The relative information will be showed on the PC.



```
C:\WINDOWS\system32\cmd.exe

D:\Burn_loader>flashwr -f sdram_config.txt -t d:\burn_loader\flashwr27pf.abs d:\burn_loader\Newloader.abs
Ali flash writer, version 1.0.7. Support to specify the destination address in FLASH
Get target setting from "D:\Burn_loader\sdram_config.txt"...
Chip: n3327
RAM size: 8M
RAM chip number: 1 pcs
Init cache by an default file "D:\Burn_loader\cache.abs"...

Get cpu debug mode from "D:\Burn_loader\sdram_config.txt"...
force to be single CPU? 0

Get info to burn flash ...
CPU access flag: 0x00000000
Handle from ICE card 0: 0x7ac

Reset EJTAG...OK
USB ICE Card Firmware version is 1.0.8
USB ICE Card Driver version is 1.0.5

1st PC from CPU 0xff200200
Config cpu...
Cache enabled.

Init RAM with default flow!
CPU mode: 3
RAM bus width is 16-bit!
Init cache with file "D:\Burn_loader\cache.abs"...
OK!
ICE opened successfully!

File "d:\burn_loader\Newloader.abs" CRC: 3A0792EB

Download tool file "d:\burn_loader\flashwr27pf.abs" to ram...size: 0x00005d
b8 bytes
Download success!
Download binary file "d:\burn_loader\Newloader.abs" to ram...size: 0x00010
000 bytes
Download success!
Execute tool to write flash, length 0x10000 (65536) , src addr 0x80010000.
..
test: file length: 0x10000(65536)
test: flash offset 0x0
test: ram src addr: 0x80010000
Binary Length: 0x10000 CRC: 3A0792EB
00000000 OK
00004000 OK
00006000 OK
00008000 OK
Burn 00010000 OK
Terminate monitor thd
```

9: When there are some character string such as " Burn 001F0000 OK, Terminate monitor thd, wait monitor thd " on the screen, that shows the updating is finished.

10: After finished the above procedure, the Flash redownload is successful, pls **power off** the DVB, and then remove the short-circuit, and disconnect the J-Tag from DVB, then everything is ok, the software will work accordingly.

Note: If fail burn loader, pls reconnect the J-tag and retry.